



LOGIC
Forest Solutions Ltd



OHIWA FOREST MONITORING RESULTS PUBLIC SUMMARY

October 2023 -September 2024

Monitoring Results Summary

This summary contains results of monitoring that are not commercially sensitive.

All Monitoring is included however where results are confidential, they will be stated.

Monitoring Schedule (Results Summary)

Genetically Modified Organisms (Effects of Chemical, Bio Control, GMO, or Fertiliser Use)

Factor Monitored	Monitoring Activity	Monitoring Requirement: Certification Criteria	Frequency/Due Date	Results Summary
Use of Genetically modified organisms.	Effects of Chemical, Bio Control, GMO, or Fertiliser Use	Environmental Impacts and Changes in Environmental conditions (8.2.2) Impacts (8.2.2) d. The use of Genetically modified organisms to confirm that they are not being used. (Criterion 10.4);	Annual September 1st at Tree Stock ordering	Confirmation from the Nursery provider that no GMO Organisms are used

Note: Currently no Genetically Modified Organisms are used within the FMU and none are intended to be used.

Biological Control Agents (Effects of Chemical, Bio Control, GMO, or Fertiliser Use)

Factor Monitored	Monitoring Activity	Monitoring Requirement: Certification Criteria	Frequency/Due Date	Results Summary
Any biological control agents are documented by outside agency on release	Effects of Chemical, Bio Control, GMO, or Fertiliser Use	Environmental Impacts and Changes in Environmental conditions (8.2.2) Impacts (8.2.2) m. Any biological control agents are documented by outside agency on release;	When requested by outside Agency. Follow LFSL Biological Control Agents Policy and Procedure	No Bio-control Agents used
Adverse impacts from the use of biological control agents are monitored	Effects of Chemical, Bio Control, GMO, or Fertiliser Use	Environmental Impacts and Changes in Environmental conditions (8.2.2) Impacts (8.2.2). Adverse impacts from the use of biological control agents (Criterion 10.8);	When requested by outside Agency. Follow LFSL Biological Control Agents Policy and Procedure.	No Bio-control Agents used

Note: Currently no Bio-Control Agents are used within the FMU and none are intended to be used. At times Regional Authorities may request releases, these will be assessed and follow LFSL Biological Control Agents Policy and Procedure

Chemical Use (Effects of Chemical, Bio Control, GMO, or Fertiliser Use)

Factor Monitored	Monitoring Activity	Monitoring Requirement: Certification Criteria	Frequency/Due Date	Results Summary
Check Chemical against Prohibited list	Effects of Chemical, Bio Control, GMO, or Fertiliser Use	Environmental Impacts and Changes in Environmental conditions (8.2.2) Impacts (8.2.2) j. Pesticides used are checked against FSC prohibited list and NZ exempt list on introduction of new pesticide;	Pre-Operational Check	No Chemicals used in the FMU at time of report preparation
Environmental damage following spray releases	Effects of Chemical, Bio Control, GMO, or Fertiliser Use	Environmental Impacts and Changes in Environmental conditions (8.2.2) Impacts (8.2.2) k. Checks are made to ensure environmental damage is avoided after spray releases;	Post Operational Check	No Chemicals used in the FMU at time of report preparation
Chemical (Active Ingredient) use rates per hectare are collated for reporting annually for the period ending 30 June of each year.	Effects of Chemical, Bio Control, GMO, or Fertiliser Use	HSW and Operational Monitoring Environmental Impacts and Changes in Environmental conditions (8.2.2)	Per operation	No Chemicals used in the FMU at time of report preparation
Health of workers exposed to pesticides	Contractor Health, Safety and Wellbeing	Social Impacts of management activities (8.2.1) Social Impacts (8.2.1) i. Where pesticides are used, the health of workers exposed to pesticides (Criterion 2.5 and Criterion 10.7)	Biannual Contractor Survey	No Chemicals used in the FMU at time of report preparation

Pest Management (for full details see the IPMS)

Factor Monitored	Monitoring Activity	Monitoring Requirement: Certification Criteria	Frequency/Due Date	Results Summary
Survey (Drone) forest boundary annually. Removal of any found, in consultation with landowner. Spray, pull, or cut/paste stump.	Wilding conifer control	Environmental Impacts and Changes in Environmental conditions (8.2.2) Environmental Impacts and Changes in Environmental conditions (8.2.2)	Annually in September	Survey delayed until November 2024 due to staff availability
Control when sign becomes apparent or detected in Monitoring, particularly during the establishment phase of the plantation. Ground shooting via forest access permit system.	Deer, pigs, sheep	Environmental Impacts and Changes in Environmental conditions (8.2.2) Environmental Impacts and Changes in Environmental conditions (8.2.2)	Ongoing	Survey of pests to commence in Ohiwa October 2024
Survey forests every 3 years. Apply control when limits are exceeded: – Possum: Residual Trap Catch (RTC) as per IPMS – Rabbit: level 3 modified McLean Scale	Possum and rabbit control	Environmental Impacts and Changes in Environmental conditions (8.2.2) Environmental Impacts and Changes in Environmental conditions (8.2.2)	Survey forests every 3 years.	Survey of pests to commence in Ohiwa October 2024

Operational Management Activities - Harvesting and Roding

Factor Monitored	Monitoring Activity	Monitoring Requirement: Certification Criteria	Frequency/Due Date	Results Summary
Impacts (8.2.2) o. The impacts of infrastructural development, transport activities and silviculture to rare and threatened species, habitats, ecosystems, landscape values water and soils (Criterion 10.10);	Earthworks, Roding and Infrastructure Monitoring	Environmental Impacts and Changes in Environmental conditions (8.2.2) Impacts (8.2.2) o. The impacts of infrastructural development, transport activities and silviculture to rare and threatened species, habitats, ecosystems, landscape values water and soils (Criterion 10.10);	LFSL and Industry Best practices are audited at each site visit.	
Impacts (8.2.2) p. Soil stabilisation including roding is monitored ongoing or until stability achieved;	Earthworks, Roding and Infrastructure Monitoring	Environmental Impacts and Changes in Environmental conditions (8.2.2) Impacts (8.2.2) p. Soil stabilisation including roding is monitored ongoing or until stability achieved;	LFSL and Industry Best practices are audited at each site visit.	
Changes in condition (8.2.2)g. Maintenance is monitored;	Earthworks, Roding and Infrastructure Monitoring	Environmental Impacts and Changes in Environmental conditions (8.2.2) Changes in condition (8.2.2)g. Maintenance is monitored;	LFSL and Industry Best practices are audited at each site visit.	

Deposition, accumulation, and transport of debris materials in the paths to water and waterways	Debris in waterways leading to Off-site effects	Environmental Impacts and Changes in Environmental conditions (8.2.2) Environmental Impacts and Changes in Environmental conditions (8.2.2)	Post harvest records for each setting, Quarterly Drone imagery	
---	---	---	--	--

Fertiliser Use (Note: Fertilisers are not currently used in the FMU)

Factor Monitored	Monitoring Activity	Monitoring Requirement: Certification Criteria	Frequency/Due Date	Results Summary
Environmental damage following fertiliser application	Effects of Chemical, Bio Control, GMO, or Fertiliser Use	Environmental Impacts and Changes in Environmental conditions (8.2.2) Impacts (8.2.2) f. Number of Adverse impacts to environmental values from fertilisers (Criterion 10.6);	Post Operational Check	No Fertilisers were used in the FMU at time of report preparation
Register	Effects of Chemical, Bio Control, GMO, or Fertiliser Use	Environmental Impacts and Changes in Environmental conditions (8.2.2) Impacts (8.2.2) g. List of fertilisers and application rates kept ongoing	Annually in June	No Fertilisers were used in the FMU at time of report preparation
Environmental damage following fertiliser application	Effects of Chemical, Bio Control, GMO, or Fertiliser Use	Environmental Impacts and Changes in Environmental conditions (8.2.2) Impacts (8.2.2) h. Any damage from fertiliser use documented including remedy as occurs i. Adverse impacts from the use of pesticides (Criterion 10.7)	Post Operational Check	No Fertilisers were used in the FMU at time of report preparation

Note: Currently no Fertilisers are used within the FMU and none are intended to be used. If required these will be assessed and follow LFSL Fertiliser Policy.

Compliance with all applicable Laws and Regulations.

Factor Monitored	Monitoring Activity	Monitoring Requirement: Certification Criteria	Frequency/Due Date	Results Summary
Compliance from Regulatory Authority / WorkSafe inspections	Compliance with all applicable Laws and Regulations.	Social Impacts of management activities (8.2.1) Social Impacts (8.2.1) b. Compliance with applicable laws, local laws, ratified international conventions and obligatory codes of practice (Criterion 1.5);	As approached	
Compliance from Regulatory Authority / Resource consents. NESCF	Compliance with all applicable Laws and Regulations.	Social Impacts of management activities (8.2.1) Social Impacts (8.2.1) b. Compliance with applicable laws, local laws, ratified international conventions and obligatory codes of practice (Criterion 1.5);	As approached	
Enforcement Actions	Compliance with all applicable Laws and Regulations.	Social Impacts of management activities (8.2.1) Social Impacts (8.2.1) b. Compliance with applicable laws, local laws, ratified international conventions and obligatory codes of practice (Criterion 1.5);	As reported	
Incidents—all forms	Compliance with all applicable Laws and Regulations.	Social Impacts of management activities (8.2.1) Social Impacts (8.2.1) b. Compliance with applicable laws, local laws, ratified international conventions and obligatory codes of practice (Criterion 1.5);	As reported	

LFSL — CAR system	Compliance with all applicable Laws and Regulations.	Social Impacts of management activities (8.2.1) Social Impacts (8.2.1) b. Compliance with applicable laws, local laws, ratified international conventions and obligatory codes of practice (Criterion 1.5);	Continually and Annual Summary, Monthly Safety Meeting	
LFSL internal audits	Compliance with all applicable Laws and Regulations.	Social Impacts of management activities (8.2.1) Social Impacts (8.2.1) b. Compliance with applicable laws, local laws, ratified international conventions and obligatory codes of practice (Criterion 1.5);	Continually and Annual Summary	
Incidents—all forms	Incidents/Accidents	HSW and Operational Monitoring Social Impacts (8.2.1) b. Compliance with applicable laws, local laws, ratified international conventions and obligatory codes of practice (Criterion 1.5);	Reported ASAP	
Compliance with Environmental Standards and Regulations	Environmental Section Site Visit	HSW and Operational Monitoring Social Impacts (8.2.1) b. Compliance with applicable laws, local laws, ratified international conventions and obligatory codes of practice (Criterion 1.5);	Monthly	

Economic Viability of the Business and FMU

Factor Monitored	Monitoring Activity	Monitoring Requirement: Certification Criteria	Frequency/Due Date	Results Summary
Overall economic viability of the management unit is positive	Economic Viability of the Business and FMU Profitability	Social Impacts of management activities (8.2.1) Social Impacts (8.2.1) s. Long-term economic viability (Criterion 5.5);Forest Economic Value	Annual	Confidential Results
To ensure our business is Commercially and Economically viable.	Economic Viability of the Business and FMU Profitability	Social Impacts of management activities (8.2.1) Social Impacts (8.2.1) s. Long-term economic viability (Criterion 5.5);Forest Economic Value	Annual	Confidential Results
To ensure our clients forests are Commercially and Economically viable.	Economic Viability of the Business and FMU Profitability	Social Impacts of management activities (8.2.1) Social Impacts (8.2.1) s. Long-term economic viability (Criterion 5.5);Forest Economic Value	Annual	Confidential Results
Overall Health of Forest, identify impact of emerging forest health trends in the Industry, and emerging issues within the forest	Forest Health Survey	Forest Health	On rotation	Awaiting joining the Forest Health Survey Cycle
Plantation area / species / reserve trends	Forest Value	Forest Area	Annual	Reserves CAN Results

Forest Access -Illegal Entry and theft.

Factor Monitored	Monitoring Activity	Monitoring Requirement: Certification Criteria	Frequency/Due Date	Results Summary
------------------	---------------------	--	--------------------	-----------------

Discovery or inspections of security gates and locks, camera footage if available. Reports from Stakeholders.	Illegal Entry and theft.	Social Impacts of management activities (8.2.1) Social Impacts (8.2.1) a. Evidence of illegal or unauthorized activities (Criterion 1.4);	As reported/Just cause	Trespass or property damage results
---	--------------------------	---	------------------------	-------------------------------------

Forest Conversion

Factor Monitored	Monitoring Activity	Monitoring Requirement: Certification Criteria	Frequency/Due Date	Results Summary
Plantation was established after 1994	Confirm the forest was not converted from Indigenous Vegetation after 1994	Environmental Impacts and Changes in Environmental conditions (8.2.2) Changes in condition (8.2.2) l. The status of plantations established after 1994 (Criterion 6.10);	Completed	The plantation was not converted from Indigenous Vegetation after 1994

Staff & Contractor Employment

Factor Monitored	Monitoring Activity	Monitoring Requirement: Certification Criteria	Frequency/Due Date	Results Summary
Master contracts with staff - Contracts current with 2-year minimum term	Valid & fair contracts — all staff and contractors	Social Impacts of management activities (8.2.1) Social Impacts (8.2.1) e. Gender equality, sexual harassment and gender discrimination (Criterion 2.2); d. Programs and activities regarding workers' rights (Criterion 2.1 g. Payment of wages (Criterion 2.4););h. Worker training (Criterion 2.5);	Continually	Confidential Results
Contracts with Contractors - Contracts current with 2-year minimum term	Valid & fair contracts — all staff and contractors	Social Impacts of management activities (8.2.1) Social Impacts (8.2.1) g. Payment of wages (Criterion 2.4);	Continually	Confidential Results
Staff Survey	Social	Social Impacts of management activities (8.2.1)	Annually at Performance review	Confidential Results

Waste Management

Factor Monitored	Monitoring Activity	Monitoring Requirement: Certification Criteria	Frequency/Due Date	Results Summary
No accumulations of Waste containers in the forest. Contractors have an appropriate arrangement for disposal.	Fuel, Oil, Agrichemical and Hazardous Waste Management	Environmental Impacts and Changes in Environmental conditions (8.2.2) Impacts (8.2.2) r. Environmentally appropriate disposal of waste materials (Criterion 10.12)	Observations and reporting at each Site visit	Council and Staff Site visits indicate compliance
Agrichemicals (when used) have an appropriate arrangement for disposal.	Fuel, Oil, Agrichemical and Hazardous Waste Management	Environmental Impacts and Changes in Environmental conditions (8.2.2) Impacts (8.2.2) r. Environmentally appropriate disposal of waste materials (Criterion 10.12)	Annual review. Observations from each site visit	No Chemicals were used in the FMU at time of report preparation

Impacts of Management Activities - Stream Health

Factor Monitored	Monitoring Activity	Monitoring Requirement: Certification Criteria	Frequency/Due Date	Results Summary
Surface Water and site Monitoring and Lab analysis of Water Quality measures and eDNA	Stream Health Monitoring	Environmental Impacts and Changes in Environmental conditions (8.2.2) Changes in condition (8.2.2)h. Water bodies and water quality (Criterion 6.7);	Biannual (Spring and Autumn)	See below

Stream Health Monitoring Results;

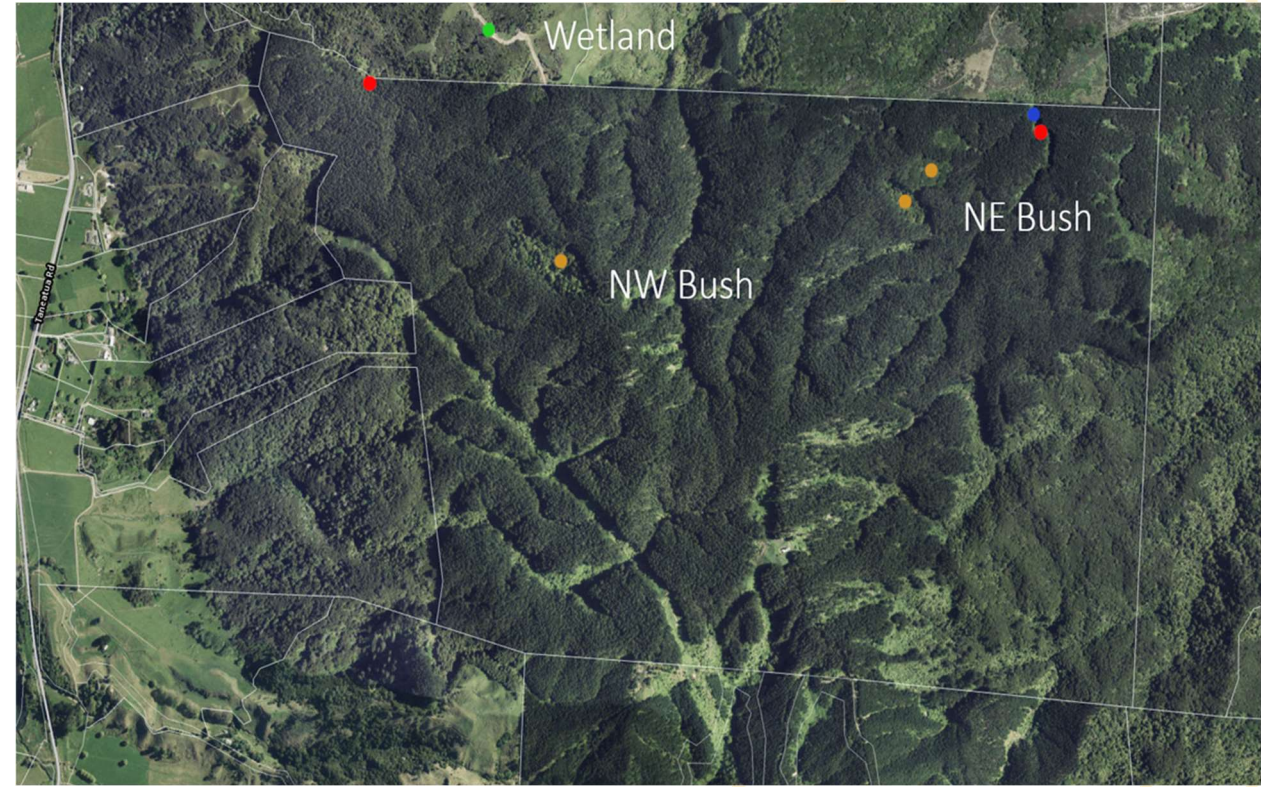


Figure 1 Stream Health Monitoring Locations Ohiwa Forest

STREAM DATA - SITE 1							
Date	Time	Temperature	Conductivity	Nitrate mg/L	Phosphate mg/L	TSS g/m3	E.coli MPN/100mL
9/11/2023	10.10am	11.7	114	0.77	0.05	4.5	6
22/04/2024	11.59am	13.9	121	0.75	0.03	1	58

STREAM DATA - SITE 2							
Date	Time	Temperature	Conductivity	Nitrate mg/L	Phosphate mg/L	TSS mg/L	E.coli MPN/100mL
9/11/2023	2.38pm	13.6	125	0.75	0.09	8.4	25
22/04/2024	2.45pm	14.7	127	1.33	0.11	0.81	37

Operational Contractor Management - Harvesting and Earthworks Management

Factor Monitored	Monitoring Activity	Monitoring Requirement: Certification Criteria	Frequency/Due Date	Results Summary
<i>Earthworks Prescription prepared and delivered</i>	<i>Earthworks Prescription</i>	<i>HSW and Operational Monitoring</i>	<i>Pre-start/New Setting</i>	<i>Confidential content</i>
<i>Harvest Prescription prepared and delivered</i>	<i>Harvest Prescription</i>	<i>HSW and Operational Monitoring</i>	<i>Pre-start/New Setting</i>	<i>Confidential content</i>
<i>Full Operational Audit</i>	<i>Full Operational Audit</i>	<i>HSW and Operational Monitoring</i>	<i>Two per year (2 month close out window)</i>	<i>Confidential content</i>
<i>Harvesting Site Inspection Report</i>	<i>Harvesting Inspection Report</i>	<i>HSW and Operational Monitoring</i>	<i>Two per month (minimum)</i>	<i>Confidential content</i>
<i>Harvest Report of Operation</i>	<i>Harvest Report</i>	<i>HSW and Operational Monitoring</i>	<i>Monthly</i>	<i>Confidential content</i>
<i>Harvesting Setting Completion Report</i>	<i>Harvesting Setting Completion Report</i>	<i>HSW and Operational Monitoring</i>	<i>Completion of Setting</i>	<i>Confidential content</i>
<i>Post-Harvest Audit</i>	<i>Post-Harvest Audit</i>	<i>HSW and Operational Monitoring</i>	<i>Per operation and setting</i>	<i>Confidential content</i>
<i>Log Inspection</i>	<i>Log Inspection</i>	<i>HSW and Operational Monitoring</i>	<i>Two per month (minimum)</i>	<i>Confidential content</i>
<i>Harvesting Environmental Audit</i>	<i>Harvesting Environmental Audit</i>	<i>HSW and Operational Monitoring</i>	<i>As needed</i>	<i>Confidential content</i>
<i>Harvesting Operational Audit</i>	<i>Harvesting Operational Audit</i>	<i>HSW and Operational Monitoring</i>	<i>Monthly</i>	<i>Confidential content</i>

Operational Contractor Management - Establishment and Silviculture Quality Control

Factor Monitored	Monitoring Activity	Monitoring Requirement: Certification Criteria	Frequency/Due Date	Results Summary
<i>Operational Quality Control</i>	<i>Planting QC</i>	<i>HSW and Operational Monitoring</i>	<i>Planting season</i>	<i>Confidential content</i>
<i>Operational Quality Control</i>	<i>Survival Survey</i>	<i>HSW and Operational Monitoring</i>	<i>Annual</i>	<i>Confidential content</i>
<i>Operational Quality Control</i>	<i>Thinning QC</i>	<i>HSW and Operational Monitoring</i>	<i>Per operation</i>	<i>Confidential content</i>

<i>Operational effectiveness; Payment data; Stems per hectare; Quality of planting</i>	<i>Planting Quality Control</i>	<i>HSW and Operational Monitoring</i>	<i>Throughout planting season immediately behind the planting operation</i>	<i>Confidential content</i>
<i>Evidence of Planting for ETS purposes</i>	<i>Planting Quality Control</i>	<i>HSW and Operational Monitoring</i>	<i>Throughout planting season immediately behind the planting operation</i>	<i>Confidential content</i>
<i>Silviculture Site Inspection Report</i>	<i>Silviculture Inspection Report</i>	<i>HSW and Operational Monitoring</i>	<i>Two per month (minimum)</i>	<i>Confidential content</i>

Forest Productivity

Factor Monitored	Monitoring Activity	Monitoring Requirement: Certification Criteria	Frequency/Due Date	Results Summary
<i>Maintain and enhance value</i>	<i>Forest Value</i>	<i>Forest Economic Value</i>	<i>Annual</i>	<i>Confidential content</i>
Periodic Inventory	Forest Growth	Forest Area	At Owners request	No further Inventory carried out
<i>Log Quality and Value Recovery</i>	<i>Log Quality and Value Recovery</i>	<i>HSW and Operational Monitoring</i>	<i>Monthly reporting and Annual summary</i>	<i>Confidential content</i>
<i>Log grade outturn value maximised</i>	<i>Forest Value</i>	<i>HSW and Operational Monitoring</i>	<i>Monthly reporting and Annual summary</i>	<i>Confidential content</i>
<i>Sustainable supply of Forest Products [Site productivity - Yield of all forest products harvested]</i>	<i>Forest Value</i>	<i>Forest Economic Value</i>	<i>Monthly reporting and Annual summary</i>	<i>Confidential content</i>
<i>Forest Valuation (Target is to produce a total recoverable volume (TRV in M3) from the productive hectares of at least the average TRV per hectare of the previous rotation where the regimes applied are the same.)</i>	<i>Forest Value</i>	<i>Environmental Impacts and Changes in Environmental conditions (8.2.2) Impacts (8.2.2) e. The results of silvicultural activities (Criterion 10.5);</i>	<i>Annual</i>	<i>Confidential content</i>
<i>Forest Valuation (Target is to produce a total recoverable volume (TRV in M3) from the productive hectares of at least the average TRV per hectare of the previous rotation where the regimes applied are the same.)</i>	<i>Harvest Volume vs Predicted</i>	<i>Forest Economic Value Social Impacts (8.2.1) q. Actual compared to projected annual harvests of timber and non-timber forest products (Criterion 5.2);</i>	<i>Monthly reporting and Annual summary</i>	<i>Confidential content</i>
<i>Forest Valuation (Target is to produce a total recoverable volume (TRV in M3) from the productive hectares of at least the average TRV per hectare of the previous</i>	<i>Harvest Yield</i>	<i>Forest Economic Value</i>	<i>Monthly reporting and Annual summary</i>	<i>Confidential content</i>

<i>rotation where the regimes applied are the same.)</i>				
<i>Forest Valuation (Target is to produce a total recoverable volume (TRV in M3) from the productive hectares of at least the average TRV per hectare of the previous rotation where the regimes applied are the same.)</i>	<i>Harvest Yield</i>	<i>Forest Economic Value</i>	<i>Annual</i>	<i>Confidential content</i>
Sustained product flows and employment. Sustainable work programs	Social	Social Impacts of management activities (8.2.1) Social Impacts (8.2.1) p. The production of diversified benefits and/or products (Criterion 5.1);	Monthly reporting and Annual summary	<i>Harvest progress is tracking at the rate planned to employ 1 harvest contractor for 2.6 years continuously</i>

Community

Factor Monitored	Monitoring Activity	Monitoring Requirement: Certification Criteria	Frequency/Due Date	Results Summary
Local economic and social development is prioritised through employment of local contractors where practical and meets LFSL and forest owner standards.	Community	Social Impacts of management activities (8.2.1) Social Impacts (8.2.1) o. Local economic and social development (Criterion 4.2, Criterion 4.3, Criterion 4.4, Criterion 4.5);	1 Mar Annually	Operational progress is tracking at the rate planned to employ 1 harvest contractor and 1 roading contractor sourced locally for 2.6 years continuously
Local economic and social development is prioritised through local processing where practical and meets LFSL and forest owner standards.	Community	Social Impacts of management activities (8.2.1) Social Impacts (8.2.1) r. The use of local processing, local services and local value-added manufacturing (Criterion 5.4);	1 Mar Annually	Domestic Markets are prioritised on sales and marketing of the product
Resolution of disputes and grievances (Criterion 1.6, Criterion 2.6, Criterion 4.6) actioned as per Disputes Policy and Procedures	Disputes	Social Impacts of management activities (8.2.1) Social Impacts (8.2.1) c. Resolution of disputes and grievances (Criterion 1.6, Criterion 2.6, Criterion 4.6);	As occurs	Disputes and grievances are actioned as per Disputes Policy and Procedures
Report any Stakeholder Comms on Site Visit or Safety Culture App	Social	Social Impacts of management activities (8.2.1)	As occurs	Communications are reported
Community Survey	Social	Social Impacts of management activities (8.2.1)	3 yearly Community Survey	Survey planned for Ohiwa FMU July 2025
Annual Review of activity, performance and effects of Access and permit system	Social	Social Impacts of management activities (8.2.1)	1 Mar Annually	To be completed 1 st March 2025

Ohiwa Public Access Policy Reviews	Social	Social Impacts of management activities (8.2.1) Public Access Policy	Spring 2024 initiate discussions with MTB interests and Whakatane District Council around long term visions for Public Access. <i>July 8th 2025 1st review of current policy setting.</i>	Discussions around managed public access commenced October 2024 with Whakatane District Council o
------------------------------------	--------	--	--	---

Natural Hazards Management

Factor Monitored	Monitoring Activity	Monitoring Requirement: Certification Criteria	Frequency/Due Date	Results Summary
Pre-Event Conditions	Monitor alerts for weather warnings from Metservice, Regional Authorities and NEMA	Environmental Impacts and Changes in Environmental conditions (8.2.2) Impacts (8.2.2) n. The impacts from natural hazards (Criterion 10.9);	Continuous	Carried out as required
Maintenance Records	Records to show maintenance or actions to limit damage,	Environmental Impacts and Changes in Environmental conditions (8.2.2) Impacts (8.2.2) n. The impacts from natural hazards (Criterion 10.9);	Continuous	Carried out as required
Actions from the Natural Hazards Management Plan	Activities outlined in the LFSL Natural Hazards Management Plan	Environmental Impacts and Changes in Environmental conditions (8.2.2) Impacts (8.2.2) n. The impacts from natural hazards (Criterion 10.9);	Continuous	Carried out as required
Post storm event Site Inspection	Damage Survey (Storm or other)	Environmental Impacts and Changes in Environmental conditions (8.2.2) Impacts (8.2.2) n. The impacts from natural hazards (Criterion 10.9);	As needed	Carried out as required
Deposition, accumulation, and transport of debris materials in the paths to water and waterways	Off-site effects to Taneatua Road	Environmental Impacts and Changes in Environmental conditions (8.2.2) HCV 5 Criterion 9.1.	Post harvest records for each setting, Quarterly Drone imagery, repeated at critical points identified by the Risk Assessment.	On Post Harvest Site record
Assess risk of debris movement to the critical infrastructure of Taneatua Road	Risk Assessment for Off-site effects to Taneatua Road	Environmental Impacts and Changes in Environmental conditions (8.2.2) HCV 5 Criterion 9.1.	1/11/2024	Planned for November 2024

Biodiversity Management

Factor Monitored	Monitoring Activity	Monitoring Requirement: Certification Criteria	Frequency/Due Date	Results Summary
<i>Kiwi Management Plan - Dogs (except Kiwi Tracking dogs) excluded</i>	<i>Biodiversity Management</i>	<i>Environmental Impacts and Changes in Environmental conditions (8.2.2)</i>	<i>Complete</i>	<i>Completed – no dogs except Kiwi Tracking Dogs have been excluded from the Site.</i>
<i>Kiwi Management Plan Monitoring Schedule - Kiwi Survey</i>	<i>Biodiversity Management</i>	<i>Environmental Impacts and Changes in Environmental conditions (8.2.2)</i>	<i>7th to the 26th of August, 2023</i>	<i>Complete -ARD Results below and priority Management Areas in Figure 5 below</i>
<i>Priority Kiwi Management Zones Prestart observation, Telemetry survey</i>	<i>Biodiversity Management</i>	<i>Environmental Impacts and Changes in Environmental conditions (8.2.2)</i>	<i>ongoing</i>	<i>Complete</i>

<i>Kiwi signage installed</i>	<i>Biodiversity Management</i>	<i>Environmental Impacts and Changes in Environmental conditions (8.2.2)</i>	<i>Complete</i>	<i>Complete</i>
<i>Draft Kiwi Management Plan proposed LFSL to Whakatane Kiwi Trust</i>	<i>Biodiversity Management</i>	<i>Environmental Impacts and Changes in Environmental conditions (8.2.2)</i>	<i>Complete</i>	<i>Complete</i>
<i>Operative Kiwi Management Plan agreed</i>	<i>Biodiversity Management</i>	<i>Environmental Impacts and Changes in Environmental conditions (8.2.2)</i>	<i>Complete</i>	<i>Complete</i>
<i>Kiwi Location Survey undertaken</i>	<i>Biodiversity Management</i>	<i>Environmental Impacts and Changes in Environmental conditions (8.2.2)</i>	<i>Complete</i>	<i>Complete – See ARD Results below.</i>
Rare Species Sightings	Biodiversity Survey	Environmental Impacts and Changes in Environmental conditions (8.2.2)	ongoing	Monitoring will commence with the Pest Monitoring and Control Plan in October 2024 and summarised in the next report
Condition and visible growth changes	Reserve Monitoring	Environmental Impacts and Changes in Environmental conditions (8.2.2) Impacts (8.2.2) a. The results of regeneration activities (Criterion 10.1); i. Landscape values (Criterion 6.8);	2 Yearly September 1st	Monitoring will commence with the Pest Monitoring and Control Plan in October 2024 and summarised in the next report
Condition and visible growth changes	Environmental values and ecosystem functions	Environmental Impacts and Changes in Environmental conditions (8.2.2) Changes in condition (8.2.2)d. Representative Sample Areas (Criterion 6.5);	2 Yearly September 1st	Monitoring will commence with the Pest Monitoring and Control Plan in October 2024 and summarised in the next report
Review HCV Classification	Classification of HCV 1 HCV 1 Species Diversity	Environmental Impacts and Changes in Environmental conditions (8.2.2) Changes in condition (8.2.2) m. High conservation values 1 to 4 identified in Criterion 9.1.	1/03/2025	To commence 1/03/2025
Review HCV Classification	Classification of HCV 2 -Landscape -level ecosystems	Environmental Impacts and Changes in Environmental conditions (8.2.2) Changes in condition (8.2.2) m. High conservation values 1 to 4 identified in Criterion 9.1.	1/03/2025	To commence 1/03/2025
Review HCV Classification	Classification of HCV 3 – Ecosystems and habitats	Environmental Impacts and Changes in Environmental conditions (8.2.2) Changes in condition (8.2.2) m. High conservation values 1 to 4 identified in Criterion 9.1.	1/03/2025	To commence 1/03/2025

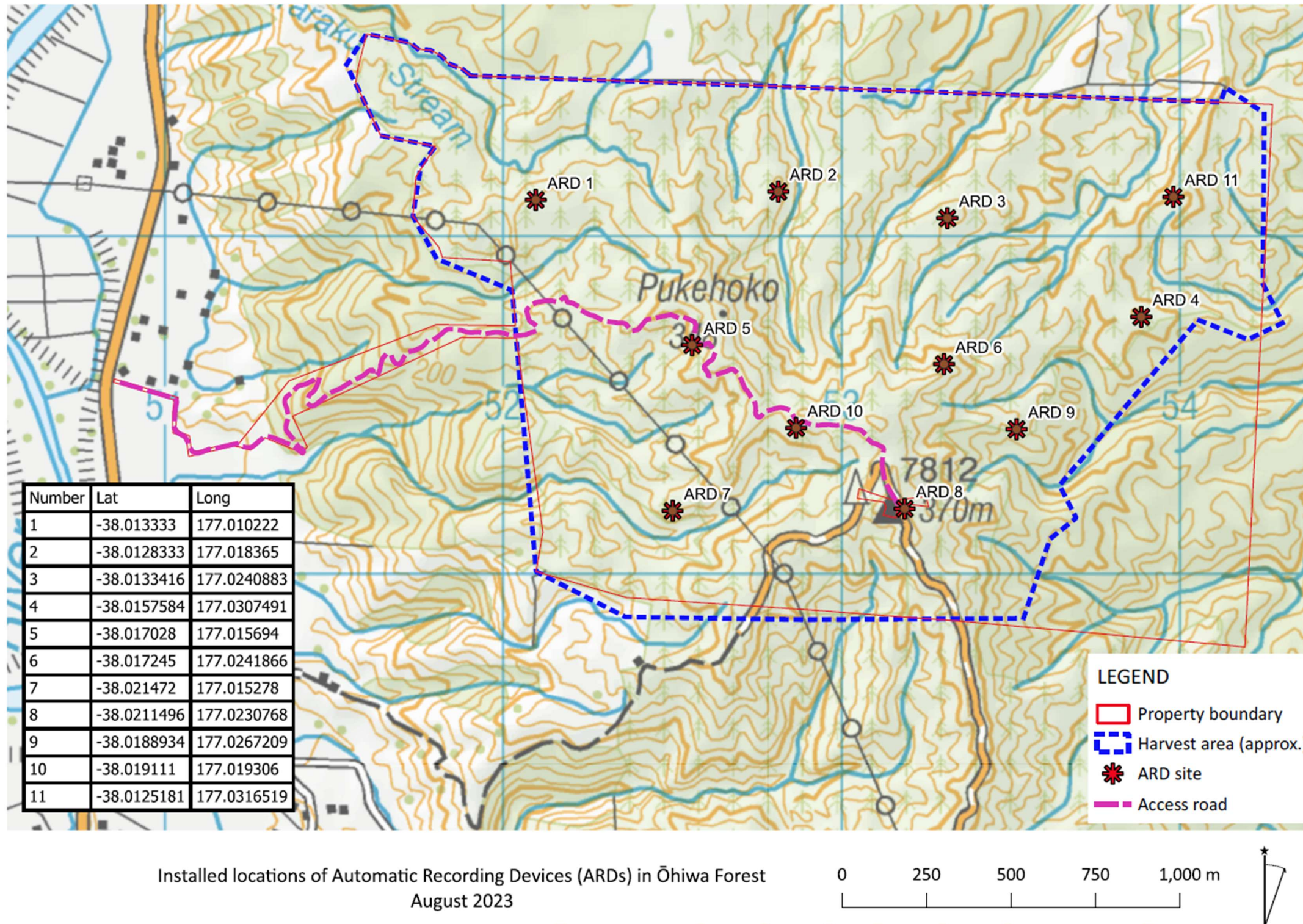


Figure 2 ARD Call Count Sites

APPENDIX 1 - Kiwi Call Survey Results

Ohiwa Forestry Block Call Count Results					
	Kiwi # calls	Distance	Sex	Possible Kiwi	Distance
Site 1					
Day 1	0				
Day 2	3	Distant	2 xM, 1x F	2	Distant
Day 3	3	Close	M		
Site 2	No data, ARD not working				
Site 3					
Day 1	3	Distant	M		
Day 2	4	1x med, 3x distant	M		
Day 3	3	1x med, 2x distant	M		
Site 4					
Day 1	3	med, distant	2xM +F	Mid duet	
Day 2	1	V Distant	M		
Day 3	3	Mid, distant	2xM 1xF		
Site 5					
Day 1	1	Distant	M		
Day 2	2	V distant	M		

Day 3	1	Distant	F		
Site 6					
Day 1	1	Distant	M		
Day 2	0				
Day 3	0				
Site 7					
Day 1	0				
Day 2	0				
Day 3	0				
Site 8					
Day 1	0				
Day 2	0				
Day 3	1	Mid	F		
Site 9					
Day 1	2	Mid	F		
Day 2	0				
Day 3	0				
Site 10					

Day 1	0				
Day 2	0				
Day 3	1	Mid	F		
Site 11					
Day 1	3	Close	F, M, F	(duet)	
Day 2	2	Mid	M		
Day 3	3	Mid	M, M, F	(duet)	

High Conservation Values (some replicated from Biodiversity)

Factor Monitored	Monitoring Activity	Monitoring Requirement: Certification Criteria	Frequency/Due Date	Results Summary
Condition and visible growth changes	Reserve Monitoring	Environmental Impacts and Changes in Environmental conditions (8.2.2) Impacts (8.2.2) a. The results of regeneration activities (Criterion 10.1); i. Landscape values (Criterion 6.8);	2 Yearly September 1st	Monitoring will commence with the Pest Monitoring and Control Plan in October 2024
Condition and visible growth changes	Environmental values and ecosystem functions	Environmental Impacts and Changes in Environmental conditions (8.2.2) Changes in condition (8.2.2)d. Representative Sample Areas (Criterion 6.5);	2 Yearly September 1st	Monitoring will commence with the Pest Monitoring and Control Plan in October 2024
<i>HCV 1 Assessment</i>	<i>Classification of HCV 1 HCV 1 Species Diversity</i>	<i>Environmental Impacts and Changes in Environmental conditions (8.2.2) Changes in condition (8.2.2) m. High conservation values 1 to 4 identified in Criterion 9.1.</i>	<i>20/6/2024</i>	<i>Completed – parts of the forest were designated HCV 1 due to Weka (see below)</i>
<i>HCV 2 Assessment</i>	<i>Classification of HCV 2 -Landscape -level ecosystems</i>	<i>Environmental Impacts and Changes in Environmental conditions (8.2.2) Changes in condition (8.2.2) m. High conservation values 1 to 4 identified in Criterion 9.1.</i>	<i>20/6/2024</i>	<i>Completed – not classified as HCV 2</i>
<i>HCV 3 Assessment</i>	<i>Classification of HCV 3 – Ecosystems and habitats</i>	<i>Environmental Impacts and Changes in Environmental conditions (8.2.2) Changes in condition (8.2.2) m. High conservation values 1 to 4 identified in Criterion 9.1.</i>	<i>20/6/2024</i>	<i>Completed– not classified as HCV 3</i>
Deposition, accumulation, and transport of debris materials in the paths to water and waterways	Off-site effects to Taneatua Road	Environmental Impacts and Changes in Environmental conditions (8.2.2) HCV 5 Criterion 9.1.	Post harvest records for each setting, Quarterly Drone imagery, repeated at critical points identified by the Risk Assessment.	On Post Harvest Site record
Assess risk of debris movement to the critical infrastructure of Taneatua Road	Risk Assessment for Off-site effects to Taneatua Road	Environmental Impacts and Changes in Environmental conditions (8.2.2) HCV 5 Criterion 9.1.	1/11/2024	Planned for November 2024
Review HCV Classification	Classification of HCV 1 HCV 1 Species Diversity	Environmental Impacts and Changes in Environmental conditions (8.2.2) Changes in condition (8.2.2) m. High conservation values 1 to 4 identified in Criterion 9.1.	1/03/2025	To commence 1/03/2025
Review HCV Classification	Classification of HCV 2 -Landscape -level ecosystems	Environmental Impacts and Changes in Environmental conditions (8.2.2) Changes in condition (8.2.2) m. High conservation values 1 to 4 identified in Criterion 9.1.	1/03/2025	To commence 1/03/2025
Review HCV Classification	Classification of HCV 3 – Ecosystems and habitats	Environmental Impacts and Changes in Environmental conditions (8.2.2) Changes in condition (8.2.2) m. High conservation values 1 to 4 identified in Criterion 9.1.	1/03/2025	To commence 1/03/2025

Review HCV Classification	Classification of HCV 4 Critical ecosystem services	Environmental Impacts and Changes in Environmental conditions (8.2.2) Changes in condition (8.2.2) m. High conservation values 1 to 4 identified in Criterion 9.1.	1/03/2025	To commence 1/03/2025
Review HCV Classification	Classification of HCV 5 Community Needs	Environmental Impacts and Changes in Environmental conditions (8.2.2) Criterion 9.1.	1/03/2025	To commence 1/03/2025
Review HCV Classification	Classification of HCV 6 Cultural Values	Environmental Impacts and Changes in Environmental conditions (8.2.2) Criterion 9.1.	1/03/2025	To commence 1/03/2025

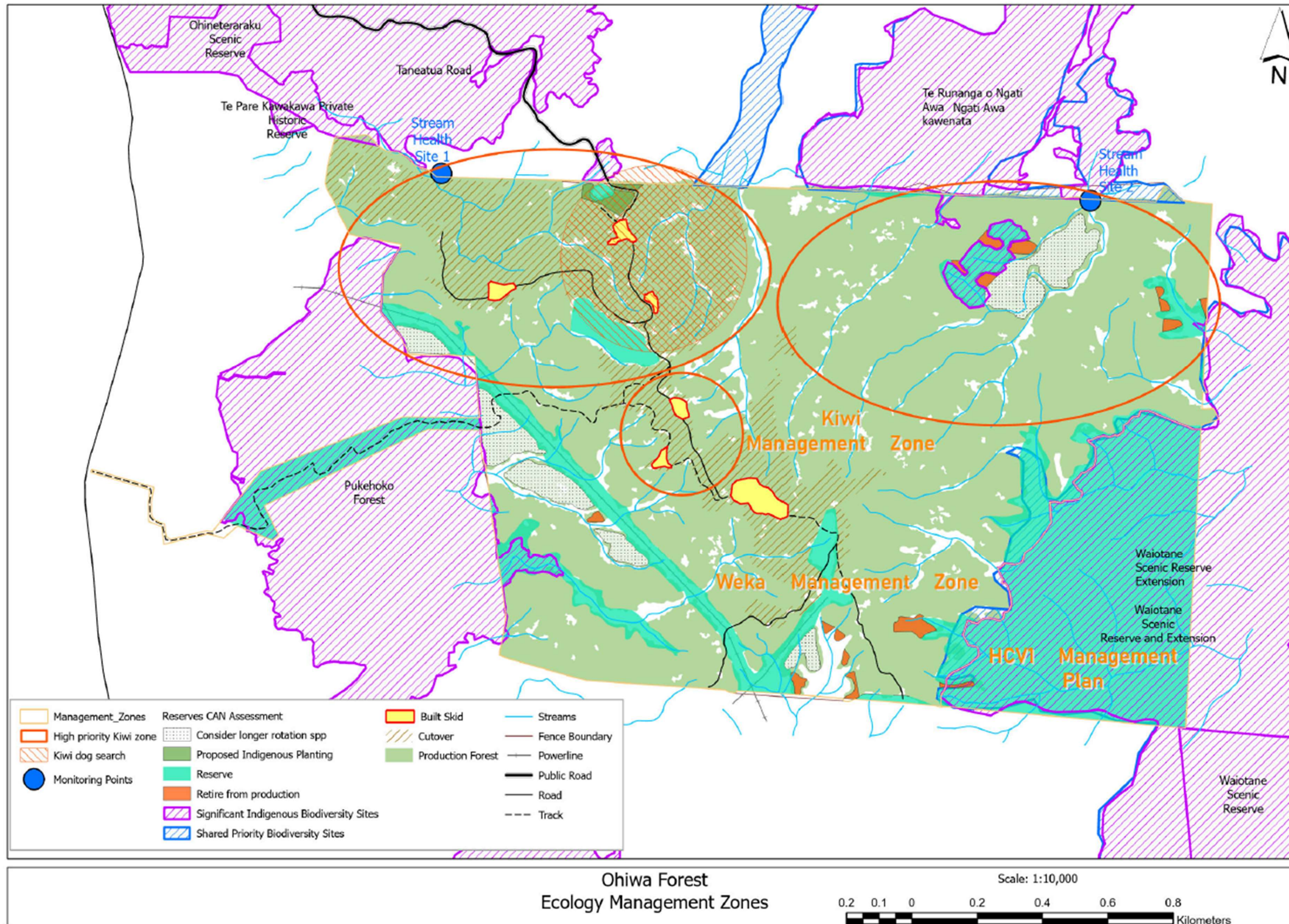


Figure 3 ecology Management Within Ohiwa Forest show HCV 1 Classification and reserves areas

Pest Monitoring and Management (For more detail see LFSL Pest Monitoring and Control Plan Ohiwa Forest)

Factor Monitored	Monitoring Activity	Monitoring Requirement: Certification Criteria	Frequency/Due Date	Results Summary
<i>Kiwi Management Plan Monitoring Schedule - Kiwi Survey</i>	<i>Establish monitoring for kiwi and predators: Kiwi Call Surveys Random camera monitoring lines for relative abundance predator monitoring & surveillance cameras</i>	<i>Rare and threatened species populations and habitat, Integrated Pest Control. (Criterion 6.4, 6.6, Principle 8, Principle 9 Criterion 10.3, 10.7 Appendix H);</i>	<i>7th to the 26th of August, 2023</i>	<i>See ARD Call Reports above. Further detail available on request</i>
<i>Kiwi Monitoring Whakatane Kiwi Trust</i>	<i>Carry out initial monitoring for kiwi and predators</i>	<i>Rare and threatened species populations and habitat, Integrated Pest Control. (Criterion 6.4, 6.6, Principle 8, Principle 9 Criterion 10.3, 10.7 Appendix H);</i>	<i>November 2023-August 2024</i>	<i>See ARD Call Reports above. Further detail available on request</i>
<i>Prepare a Pest Monitoring and Management Plan for all Pests and HCV1 species</i>	<i>Pest Monitoring and Management Plan</i>	<i>(Criterion 6.4, 6.6, Principle 8, Principle 9 Criterion 10.3, 10.7 Appendix H);</i>	<i>July 2024-August 2024</i>	<i>Completed</i>
Pest Monitoring and Management Plan	Install a Pest monitoring & trapping network	Rare and threatened species populations and habitat, Integrated Pest Control.	October 2024 onwards	Monitoring will commence with the Pest Monitoring and Control Plan in October 2024
Pest Monitoring and Management Plan	Analyse results and tailor full trap rollout October- March and/or culling requirements for large animals	Rare and threatened species populations and habitat, Integrated Pest Control.	October 2024	Monitoring will commence with the Pest Monitoring and Control Plan in October 2024
Pest Monitoring and Management Plan	Full Pest Control Plan rollout; Seasonal monitoring and control variations as needed.	(Criterion 6.4, 6.6, Principle 8, Principle 9 Criterion 10.3, 10.7 Appendix H);	November 2024- March 2025	Monitoring will commence with the Pest Monitoring and Control Plan in October 2024
Pest Monitoring and Management Plan	Installation and maintenance of signage, locked gates and surveillance to prevent illegal access and unauthorised hunting activities	Rare and threatened species populations and habitat, Integrated Pest Control.	As required	Monitoring will commence with the Pest Monitoring and Control Plan in October 2024
Pest Monitoring and Management Plan	Control, Monitoring and Revision.	(Criterion 6.4, 6.6, Principle 8, Principle 9 Criterion 10.3, 10.7 Appendix H);	2025-2029	Monitoring will commence with the Pest Monitoring and Control Plan in October 2024

Contractor Health, Safety and Wellbeing

Factor Monitored	Monitoring Activity	Monitoring Requirement: Certification Criteria	Frequency/Due Date	Results Summary
<i>Contractor Induction</i>	<i>Contractor Induction</i>	<i>HSW and Operational Monitoring Social Impacts (8.2.1) f. Programmes and activities regarding occupational health and safety (Criterion 2.3);</i>	<i>New Contractor or yearly on or before anniversary /Yearly</i>	<i>Confidential content</i>
<i>Contractor Safety Meeting</i>	<i>Contractor Safety Meeting</i>	<i>HSW and Operational Monitoring Social Impacts (8.2.1) f. Programmes and activities regarding occupational health and safety (Criterion 2.3);</i>	<i>Biannually</i>	<i>Confidential content</i>
<i>Drug Testing</i>	<i>Drug Testing</i>	<i>HSW and Operational Monitoring Social Impacts (8.2.1) f. Programmes and activities regarding occupational health and safety (Criterion 2.3);</i>	<i>Reasonable cause/post-incident/post-accident/Random</i>	<i>Confidential content</i>
<i>Systems Audit</i>	<i>Systems Audit</i>	<i>HSW and Operational Monitoring Social Impacts (8.2.1) f. Programmes and activities regarding occupational health and safety (Criterion 2.3);</i>	<i>Biennially (if Safe tree certified and annually if not certified)</i>	<i>Confidential content</i>

<i>Training Standards</i>	<i>Training Standards</i>	<i>HSW and Operational Monitoring Social Impacts (8.2.1) h. Worker training (Criterion 2.5);</i>	<i>New Contractor/New Contractor employee/Yearly</i>	<i>Confidential content</i>
<i>Training Records Analysis Internal</i>	<i>Training Record check; Workforce suitably trained and engaged. •Contractor / staff training continuous and effective</i>	<i>Social Impacts of management activities (8.2.1) Social Impacts (8.2.1) h. Worker training (Criterion 2.5); f. Programmes and activities regarding occupational health and safety (Criterion 2.3);</i>	<i>Continually as required, Quarterly check and in Annual review</i>	<i>Confidential content</i>
<i>Attend a tailgate meeting</i>	<i>Attend a tailgate meeting</i>	<i>HSW and Operational Monitoring</i>	<i>Quarterly minimum</i>	<i>Confidential content</i>
<i>Corrective Action</i>	<i>Corrective Action</i>	<i>HSW and Operational Monitoring</i>	<i>When required</i>	<i>Confidential content</i>
<i>Fire Audit (Forest Protection)</i>	<i>Fire Audit (Forest Protection)</i>	<i>HSW and Operational Monitoring</i>	<i>Yearly (month depending on season) prior to season</i>	<i>Confidential content</i>
<i>Health and Safety Report</i>	<i>Health and Safety Report</i>	<i>HSW and Operational Monitoring</i>	<i>Monthly</i>	<i>Confidential content</i>
<i>Incidents/Accidents</i>	<i>Incidents/Accidents</i>	<i>HSW and Operational Monitoring</i>	<i>Reported ASAP</i>	<i>Confidential content</i>
<i>Incidents/Accidents Logic Report</i>	<i>Incidents/Accidents Logic Report</i>	<i>HSW and Operational Monitoring</i>	<i>When required</i>	<i>Confidential content</i>
<i>Tree feller/breaker out Audit</i>	<i>Tree feller/breaker out Audit</i>	<i>HSW and Operational Monitoring</i>	<i>Quarterly</i>	<i>Confidential content</i>
<i>Safetree Uptake</i>	<i>Systems Audit – Check Contractor progress towards Safetree Certification</i>	<i>HSW and Operational Monitoring</i>	<i>Annually</i>	<i>Confidential content</i>

Cultural Values Management

Factor Monitored	Monitoring Activity	Monitoring Requirement: Certification Criteria	Frequency/Due Date	Results Summary
Monitor the Protection of sites of special cultural, ecological, economic, religious or spiritual significance to Indigenous Peoples and local communities (Criterion 3.5 and Criterion 4.7);	Cultural Values Management	Social Impacts of management activities (8.2.1) Social Impacts (8.2.1) m. Protection of sites of special cultural, ecological, economic, religious or spiritual significance to Indigenous Peoples and local communities (Criterion 3.5 and Criterion 4.7);	Ongoing	Ongoing, existing site is outside of the production area and will be relocated and marked.
Cultural Heritage Assessment	Cultural Values Management	Social Impacts of management activities (8.2.1) Social Impacts (8.2.1) n. The use of traditional knowledge and intellectual property (Criterion 3.6 and Criterion 4.8);	March 1 st 2025	Requested

Cultural Site Accidental Discovery Procedure with Crews	Cultural Values Management	Social Impacts of management activities (8.2.1) Social Impacts (8.2.1) n. The use of traditional knowledge and intellectual property (Criterion 3.6 and Criterion 4.8);	Review March 1 st 2025	Commence 1/3/2025
Review HCV 6	Cultural Values Management	Social Impacts of management activities (8.2.1)	March 1 st 2025	Commence 1/3/2025

